

INFORMATION FOR THE TEAM MANAGERS

1. Official communiqués

- To limit the use of paper, the official communiqués for the teams will be sent by email; printed copy will be provided only on request at the Permanence.

To receive communiqués and results by email, please send a message to info@rsstiming.com

- A dedicate WhatsApp group is also available to receive information and communicates about the event.

2. Training - Ostende

- It is strongly recommended to follow traffic rules during training and circulation with open traffic; Handbike Athletes **must** put a flag on their handbike.

- Official training is scheduled on May 1st from 9am to 12,00am **on the TT course**; no vehicles will be allowed on the course during this time.

- Regular training is strongly recommended at VAARTDIJK NOORD LEFFEINGE (road 40 kms long, permanently close to vehicles)

3. Time Trial

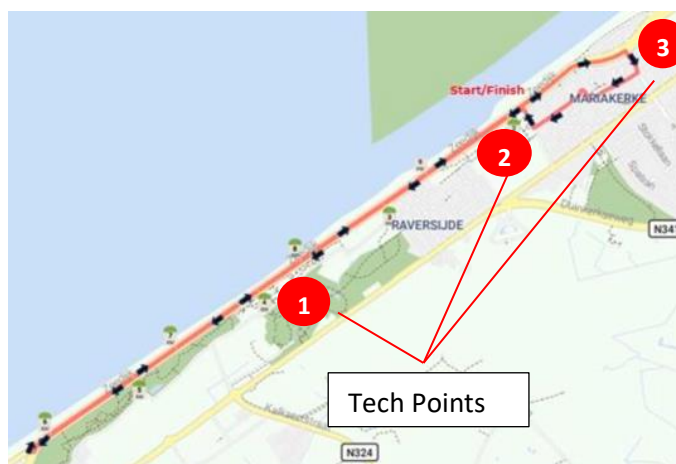
- Race course will be closed (vehicles and cyclists) 30' before the start; after this time, traffic on the course is forbidden

- Training on the race course is not allowed after the start of the first rider

- Riders must come to the bike check, located near the start area, 15 minutes before their start.

- Due to the number of Riders, following cars are **not allowed**; tech service by nations are allowed at the points as shown on the map

- After the finish line, Athletes must slow down and exit the course on Duinenstraat, after the hospital, following the instruction by the volunteers



- Tech Points :

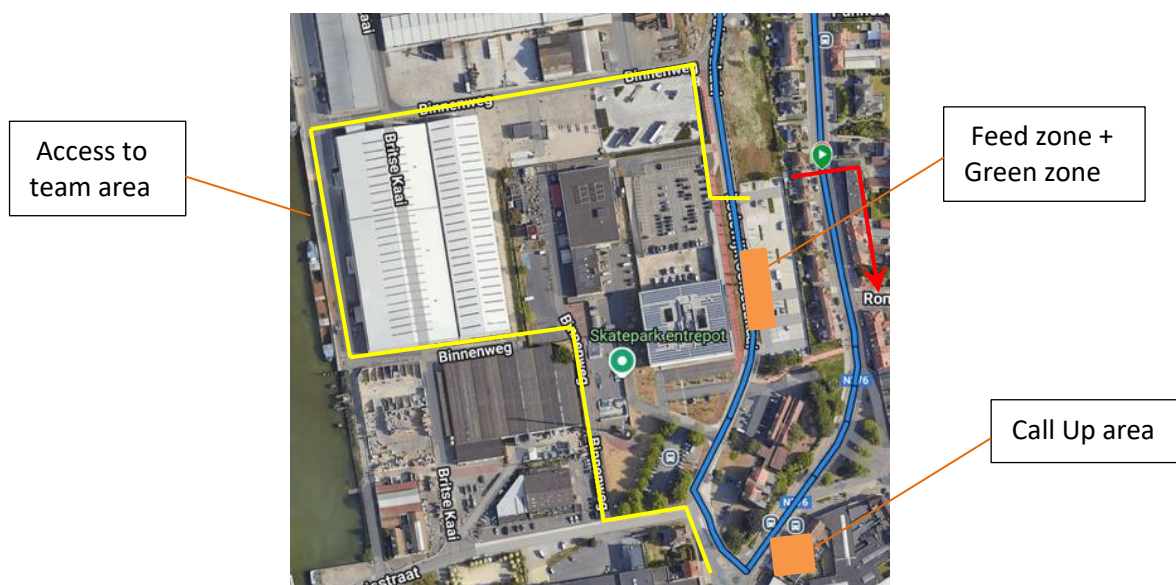
1. Raversijde (traffic light crossing Middenlaan) – both sides of the road
2. Seaside, close to Dorpstraat – both sides of the road
3. Teams Area – Acacialaan

1-4 May 2025

Communiqué n° 03

4. Road Races

- Race course will be closed (vehicles) 30' before the start; after this time, traffic on the course is forbidden.
- Training on the race course is not allowed after the start of the first race
- At the call up, Athletes are required to adopt the **"Fish-Bone system"**
- The feed zone/green zone/tech zone is located just in front the Teams Area, marked with signs.
- At the start of C1-C2-C3 races, to prevent possible accidents, rider **holders can't wear/hold** any item (backpack, wheels, etc)
- Access to Team Area during competitions will be possible via a specific way (yellow line on the map), managed by marshalls.



5. Team Relay

- Each participating Team in the Team Relay must present their start list to the Commissaires Secretary **at the Finish Line Commissaires office, Saturday 3 May at 5,30pm at least**; Team Relay meeting will be conducted just after on site.

6. Anti-doping

- For specific and more accurate instructions please look at the information provided by the Anti-Doping Officer.

7. Protocol

- We remind that the Protocol Ceremony is a **relevant part** of the event, so please Team Managers are strongly required to pay attention to take the Athletes to the Ceremony **on time**.

Wishing the success of the event to All, I remain at your disposal for any information or need you may have.

Roberto Rancilio
UCI Technical Delegate